

wxEditor Description

A multilanguage Editor based on
David Cuny's wxBasic IDE and Ralf Peters Editor

License: GPL

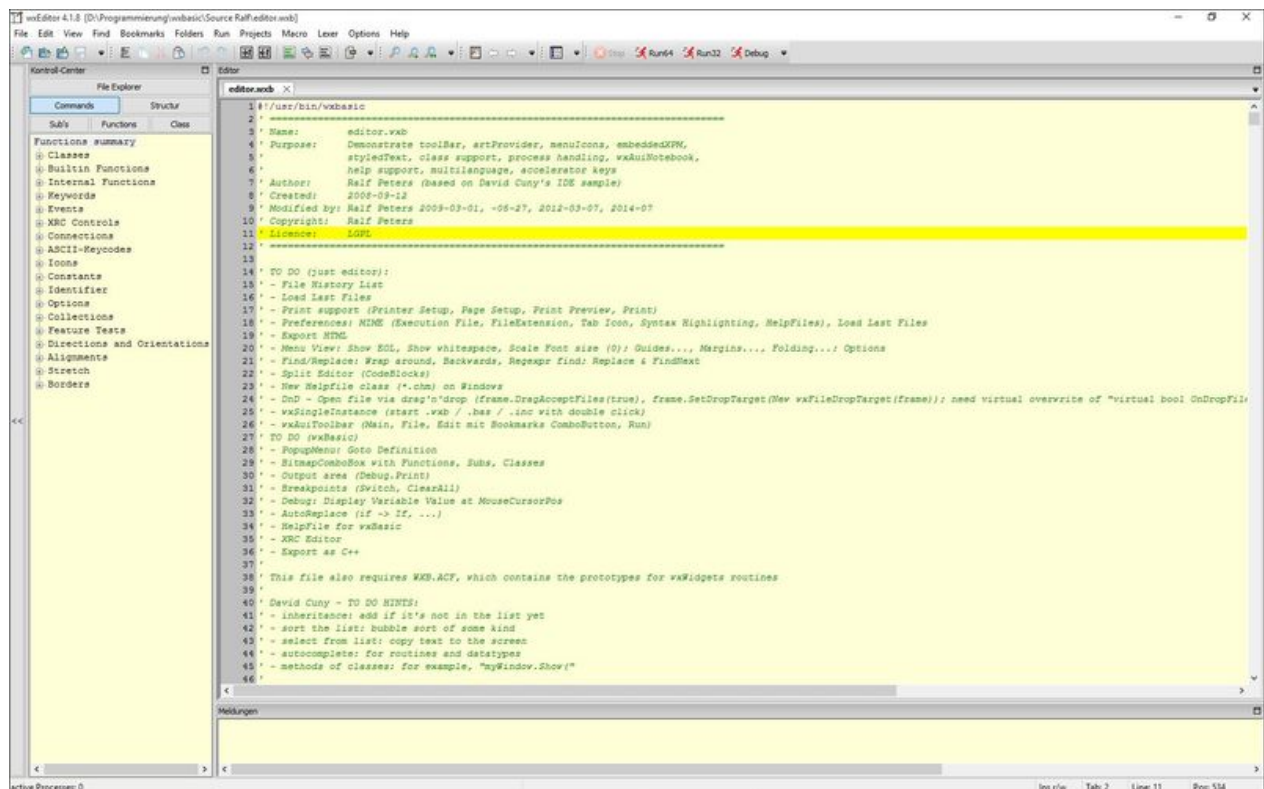
Dirk Noack

dirk.noack@wxbasic.de

<http://www.wxbasic.net>

<http://www.forum.wxbasic.de>

<http://wxbasic.sourceforge.net/phpBB2/index.php>



Inhaltsverzeichnis

1	About wxEditor	3
2	Features	3
3	System Requirements	3
4	Installation	3
5	To do	3
6	Known Problems	3
7	Start from command line	3
8	First Start	3
8.1	The Editor Window	3
8.2	The Control Centre	3
8.3	The Log Window	3
9	The Menus	3
9.1	File Menu	3
9.2	Edit Menu	4
9.3	View Menu	5
9.4	Find Menu	5
9.5	Bookmarks Menu	6
9.6	Folders Menu	6
9.7	Run Menu	6
9.8	Projects Menu	6
9.9	Macros Menu	7
9.10	Lexer Menu	7
9.11	Fonts	7
9.12	Options Menu	7
9.13	Help Menu	8
10	Disclaimer	8

1 About wxEditor

wxEditor is an editor and IDE for wxBasic and other programming languages. It is a result of the piecewise enhancement of David Cuny's IDE. Some parts are from Ralf Peters editor, which is implemented in the current wxBasic version.

2 Features

- ▶ toolbar with the most important functions
- ▶ view and insert all commands for wxBasic
- ▶ change the lexer and keywords for different programming languages
- ▶ multilanguage support (currently german and english only)
- ▶ control center
- ▶ project management
- ▶ bookmark management
- ▶ file backup management
- ▶ macro handling
- ▶ log window
- ▶ undo/redo
- ▶ reload/copy/delete a file
- ▶ insert time/date/file
- ▶ make code as comment and reverse
- ▶ text converting options
- ▶ show folders
- ▶ show line numbers
- ▶ drag'n drop support
- ▶ save and load text blocks
- ▶ change fonts/colors for each lexer
- ▶ autoIndent
- ▶ extract wxBasic interpreter
- ▶ Convert file to HTML
- ▶ Convert ANSI/ASCII
- ▶ Convert EOL

and many others.

The editor uses lexer files (*.lex), in which the keywords and commands for this lexer are placed. You can write a reference file (*.ref) for each lexer file. In a reference file are placed all commands for this programming language. A reference file can be shown in the editors control center. From here you can show all commands and insert it into the code.

3 System Requirements

- 300 MHz CPU
- 64 MB Memory
- Windows all, Linux

For maximal performance on older PC's you can uncheck all options in the 'Programming' tab of the options dialog.

4 Installation

Unpack and copy all files and directories into a directory you want.
wxEditor source files need the latest wxBasic version from wxbasic.net. Please check your version.

wxEditor does not write any entries to the registry. The ini file is saved in the home directory or in the install directory (portable mode).

5 To do

- ▶ add more functions to 'AutoCorrection'
- ▶ rewrite old routine 'Convert to HTML'
- ▶ rewrite print routine
- ▶ add page preview
- ▶ add more lexers
- ▶ add back file compare
- ▶ add back Formdesigner with more features:
 - objects in dialogs
 - sizers
 - events
 - object properties
 - must run in Linux

6 Known Problems

- ▶ hotkeys and calltips are not working correctly on Linux (german calltips, umlauts)
- ▶ the print routine is very simple, I have to test a lot
- ▶ problems are by changing colors in Linux, colors are set to black
- ▶ the clalltips maybe not correctly always

7 Start from command line

wxEditor supports several command line Options:

wxEditor.exe filename -mvisible -cvisible -avisible -zzoom

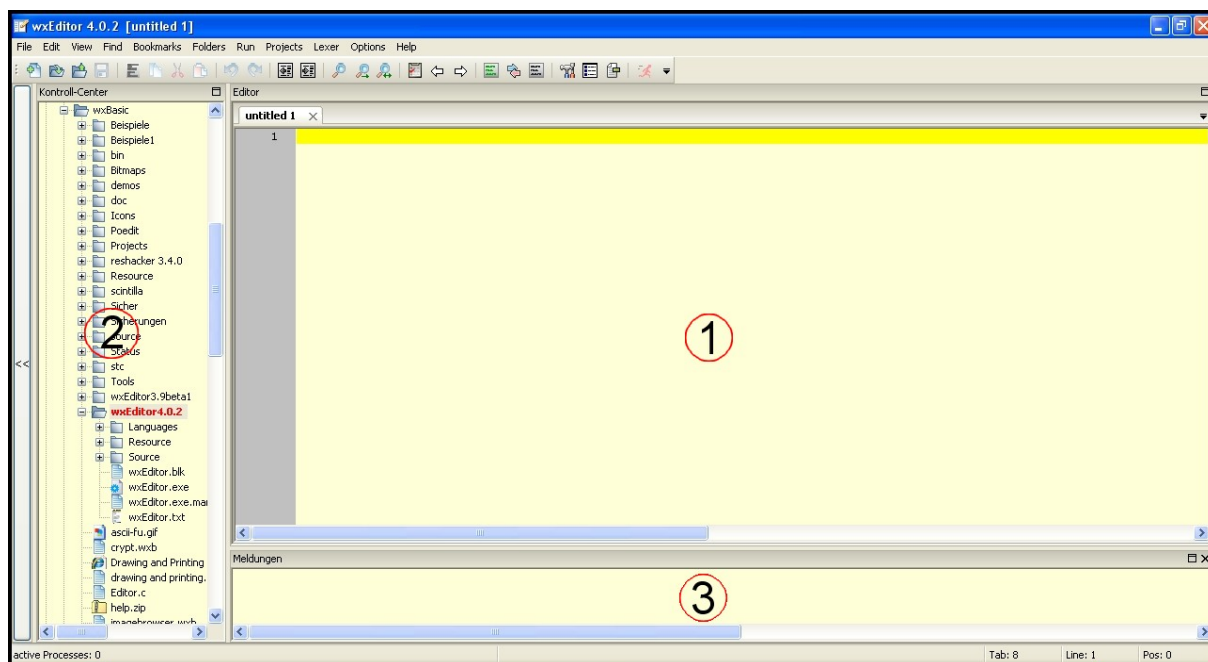
visible = 0	hide/disable the window
visible = 1	show/enable the window
-m	show/hide the message window
-c	show/hide control center
-a	enable/disable autohide control center
-zzoom	set zoom from 1 to 5
zoom = 1	125%
zoom = 2	150%
zoom = 3	200%...

example: wxEditor.exe test.wxb -m0 -c0 -a0 -z1

Load the file 'test.wxb', hide the message window and the control center. Disable the autohide feature and set the zoom to 125%.

If you use a non existing filename, a new file with this name will be created.

8 ***First Start***



At the first start you will see a blank editor without any functions. In the control center you can see a file tree. From this tree you can open or preview a file. For starting programs such as the wxbasic interpreter you can setup up to six commands in the lexer menu. At the first start no reference file is loaded and the lexer is set to "Text".

If you wish to select for example the wxbasic lexer as the default lexer you can open a wxBasic file (*.wxb) or click on 'wxBasic' in the lexer menu and select "Set as default" in this menu. In the options dialog you can set the automatical loading of the reference file and other options for programming.

The editor has 3 regions:

8.1 *The Editor Window*

In this window you can edit your code. It has a separate popup menu, which you can call with the right mouse button.

In your code you can get a simple help of used classes and members. Move the mouse over the code and some words are selected. For these words you can show the declared class, the member and the line of the declaration as a calltip.

With a right click on this calltip you can open the wxWidgets help and searching for the class.

Because there are different options to declare classes the result maybe not correctly always.

8.2 *The Control Center*

This is the central feature of the wxEditor. In this center you can:

- view all subs, functions and classes of the code and jump to it
- view and insert all commands of the selected programming language, if a reference file exist and loaded
- view the structure of the code
- preview, rename, delete or open a file in the file explorer

You can write a new reference file for each programming language to view and insert all commands from the control center. Be sure, that the keywords are added to the lexer file '*.lex', otherwise the program can't find this lexer and can't integrate the reference file. The name of the reference file must be the same as the lexername with the extension ".ref".

The data structure of the reference file is very simple and separated by spaces. No space is a header, one space is the first child, two spaces are sub childrens and so on. Classes, which have members, begins with a "+" char.

Insert a class or function by doubleclick on it and it opens a new dialog. In this dialog you can write all datas for the function. Needed datas are highlighted red.

For wxBasic:

If a function need a Text (value/label ...), you don't need insert the quotation mark. Select styles from the style window (if available). More than one style are possible. With doubleclick on a connection you can also insert connections to the code. The program tells you, if you have forgotten to insert a needed data field. You can also insert a style outside the dialog directly in the code by doubleclick on this.

I have not tested all classes and functions. Would you tell me please, if you found any Errors.

In the file explorer you get a popup menu, if you press the right mouse button on a file. Here you can preview, open, delete or rename a file.

The structure button let you see the real file structure. The base of the structure is created by search words, which are saved in the lexer file.

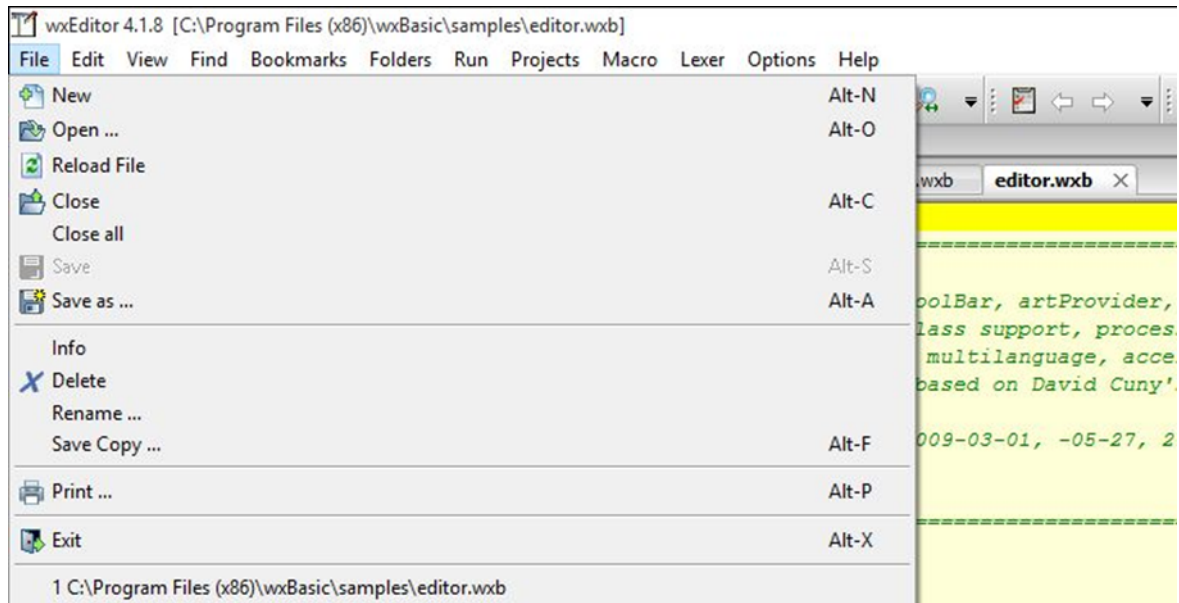
8.3 *The Log Window*

This window shows the most important messages and actions, such as error messages. You can clear this window with the 'Clear Log Window' menuitem in the view menu.

The message window has got a limit up to 1000 lines.

9 The Menus

9.1 File Menu



9.1.1 New (Alt-N)

Create a new file with the default lexer.

You can change the default lexer in the lexer menu by clicking on a lexer and select 'Set as default'.

9.1.2 Open (Alt-O)

Open a saved file.

If selecting the option 'Auto Lexer' the right lexer is automatically loaded. It is selected from the file extension.

9.1.3 Reload File

Reload the current selected file.

9.1.4 Close

Close the current selected file.

9.1.5 Close All

Close all opened files.

9.1.6 Save (Alt-S)

Save the current selected file.

9.1.7 Save As... (Alt-A)

Save the current selected file with a new filename.

9.1.8 Info

Get a simple file info of the current selected file.

9.1.9 Delete

Delete the current selected file.

9.1.10 Rename

Rename the current selected file.

9.1.11 Save a Copy (Alt-F)

Save a copy of the current selected file.

9.1.12 Print (Alt-P)

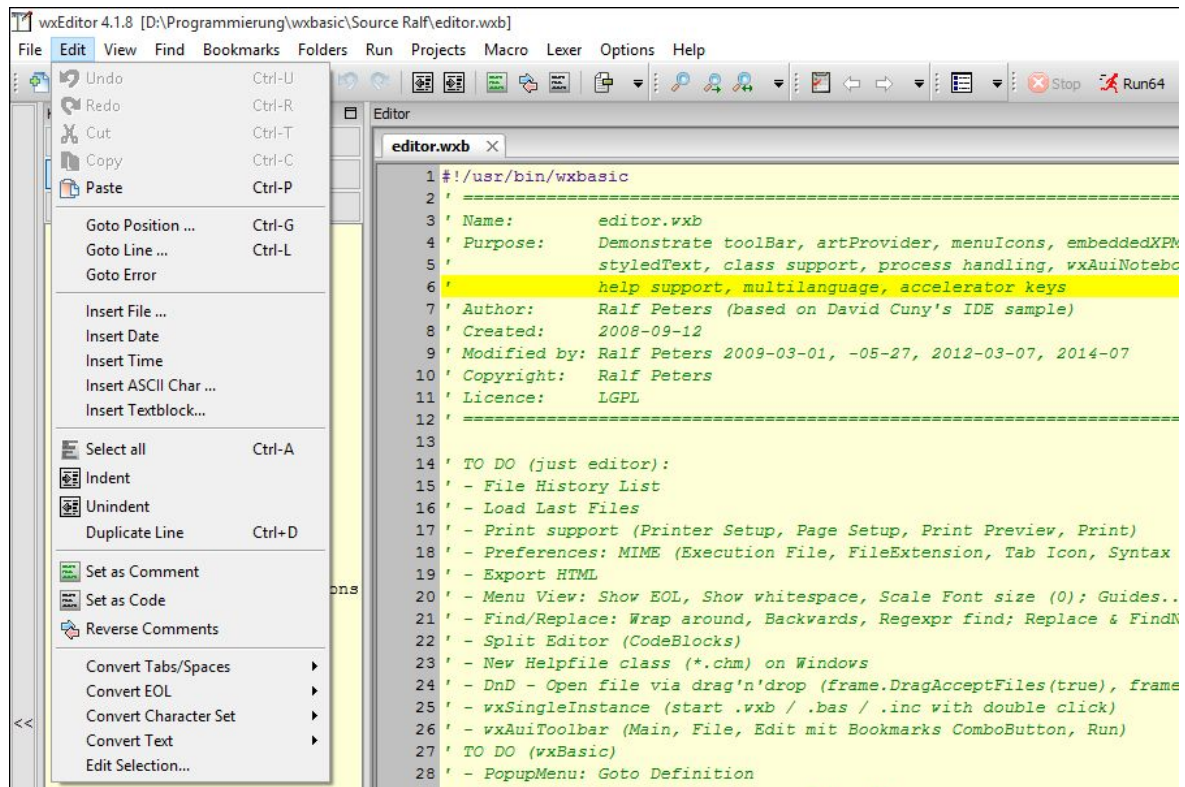
Print the current selected file.

9.1.13 Exit (Alt-X)

Exit application.

Under the menu you can show the file history. Set the counter of the history files between 0 to 30 in the options menu.

9.2 Edit Menu



9.2.1 Undo (Ctrl-U)

Undo the last action.

9.2.2 Redo (Ctrl-R)

Redo the last action.

9.2.3 Cut (Ctrl-T)

Cut the selected text to the clipboard.

9.2.4 Copy (Ctrl-C)

Copy the selected text to the clipboard.

9.2.5 Paste (Ctrl-P)

Paste text from the clipboard.

9.2.6 Goto Position (Ctrl-G)

Jump to a specified position in the text.

9.2.7 Goto Line (Ctrl-L)

Jump to a specified line in the text.

9.2.8 Goto Error

Jump to the error marker, if exist.

9.2.9 Insert File

Insert a saved file at the current position.

9.2.10 Insert Date

Insert the date on the current position.

9.2.11 Insert Time

Insert the time on the current Position.

9.2.12 Insert ASCII Char

Insert an ASCII value of the given char.

9.2.13 Insert Textblock

This menuitem let you create, save, insert, rename or delete blocks of text. In the left window all saved textblocks are displayed. By clicking on it, you can see the text in the right window.

Create a new one by clicking on the "New" button. Now you can write a new text or copy/insert a text from the buffer.

9.2.14 Select All (Ctrl-A)

Select the entire text.

9.2.15 Indent

Indent the text.

9.2.16 Unindent

Unindent the text.

9.2.17 Duplicate Line (Ctrl-D)

Make a copy of the current line. The copy is inserted after the current line.

9.2.18 Set as Comment

Set the current line as comment. The editor will insert a comment char, which is set in the lexer options menu.

9.2.19 Set as Code

Remove the comment char from front of the current line.

9.2.20 Reverse Comment

If the current line begins with a comment char, remove them. If not, add them to the line.

9.2.21 Convert Tabs/Spaces

Convert white spaces to tab or reverse.

9.2.22 Convert EOL

Convert the line ending to Mac (CR), Linux(LF) or Windows (CRLF).

9.2.23 Convert Charakter Set

Convert character set to Ansi or ASCII.

9.2.24 Convert Text

Convert text to upper or lower case.

9.2.25 Edit Selection

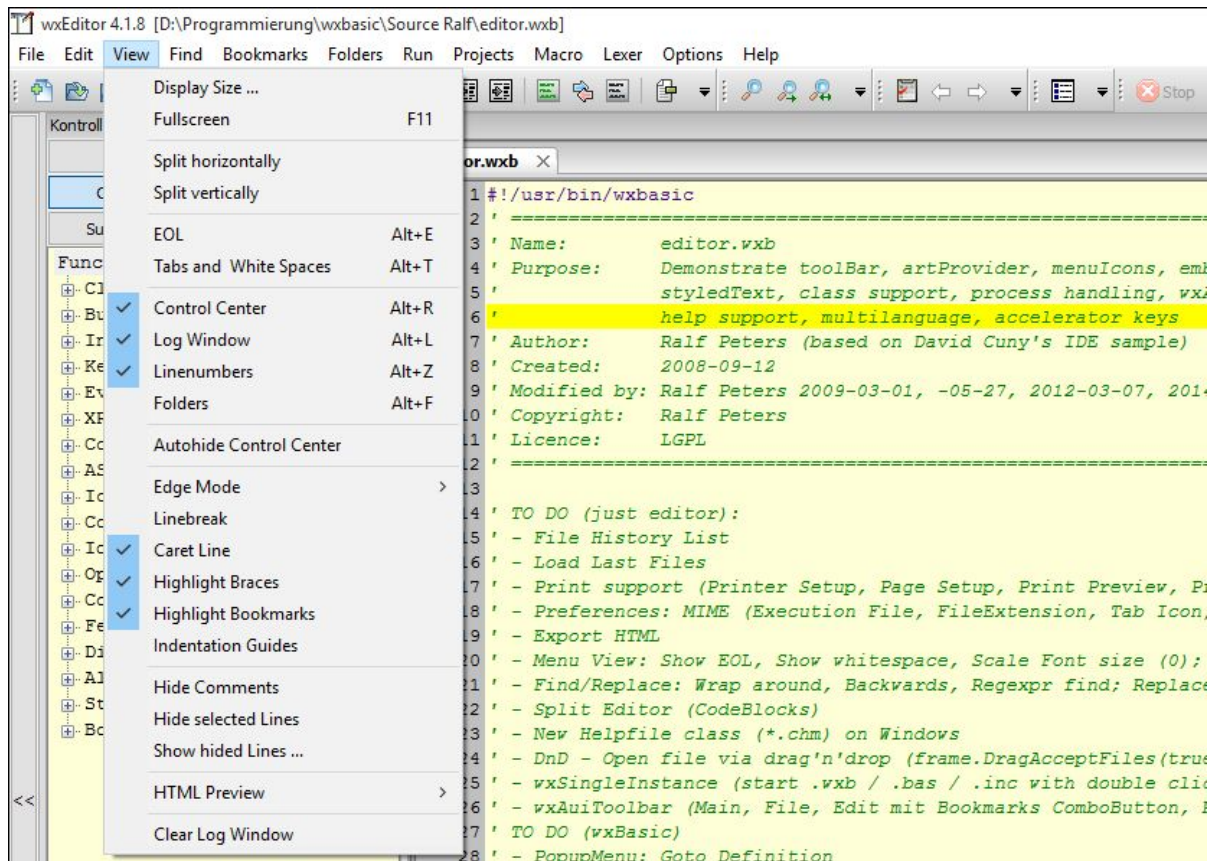
In the following dialog you can edit the selection:

- remove the spaces on the left side of the line
- remove the spaces on the right side of the line
- remove empty lines
- remove comment lines (entire line)
- remove comments in lines, leave text
- remove linebreaks

If no selection is given, the entire text would be changed.

This functions are used to reduce the file size before the file is bind as an executable.

9.3 View Menu



9.3.1 Display Size

Open a new dialog. Here you can set the display size from 50% to 250%.

9.3.2 Fullscreen (F11)

Set the main window to fullscreen. In fullscreen mode no menubar and no statusbar is shown.

9.3.3 Split horizontally

If more then one files are loaded, the editor window is split horizontally into 2 windows on the current selected file.

To remove the splitting drag the files with the mouse to the first window.

9.3.4 Split vertically

If more then one files are loaded, the editor window is split vertically into 2 windows on the current selected file.

To remove the splitting drag the files with the mouse to the first window.

9.3.5 EOL (Alt-E)

Show line end characters.

9.3.6 Tabs and White Spaces (Alt-T)

Show tabulators and white spaces.

9.3.7 Control Center (Alt-R)

Show the control center window.

9.3.8 Log Window (Alt-L)

Show the log window.

9.3.9 Linenumbers (Alt-Z)

Show line numbers in all loaded files.

9.3.10 Folders (Alt-F)

Show folders margin.

Folders are blocks of ext, which are separated with extra chars. You can open or close the folders by clicking on the '+' (closed) or '-' (opened) box in the margin.

Folders are created by the line indentation.

9.3.11 Auto Hide Control Center

Enable autohide of the control center.

If enabled, the control center will be shown, if the mouse is over the hide button and hide, if the cursor is enter the editor window.

9.3.12 Edge Mode

The edge mode display the line end. The length of the lines is set in the options dialog in the 'Linelength ...' menuitem.

You can select between three modes:

- ▶ None: no line end is shown (default)
- ▶ Line: display line end as vertical line
- ▶ Colored: display long lines colored

9.3.13 Linebreak

Break lines, if the line is longer than the display size.

9.3.14 Caret Line

Highlight the current line.

9.3.15 Highlight Braces

Highlight dedicated braces.

Dedicated braces are displayed bold. The color and font of this style (34 and 35) is set in the lexer options menu.

9.3.16 Highlight Bookmarks

Highlight bookmarks as line highlight.

The line of a bookmark becomes a colored background, otherwise a bookmark is displayed of the left side of the line in an separate margin.

9.3.17 Indentation Guides

Display indentation guides.

The indentation guides are displayed as pointed lines. This is useful to show the line indentation.

9.3.18 Hide selected Lines

Hide the selected lines.

You can hide more then one passages of the text. The hidden lines are saved to the ini file, if "Save Session" is selected in the options dialog.

9.3.19 Show hidden Lines

Opens a new window, in which you can view all hidden passages of the text.

Select a passage and press 'Show' to show the passage, otherwise 'OK' to close the window.

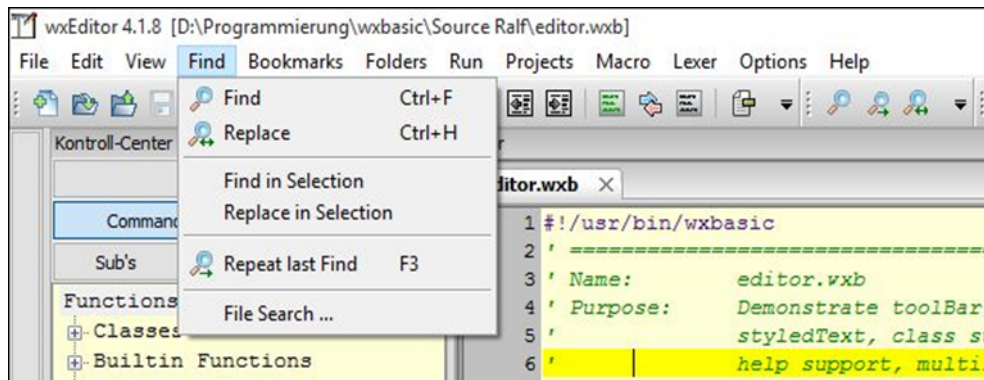
9.3.20 HTML Preview

If you write HTML source code you can preview this code in a builtin HTML window or with the default browser installed on your system.

9.3.21 Clear Log Window

Clear the log window.

9.4 Find Menu



9.4.1 Find (Ctrl-F)

Open the find dialog.
Find a word in the entire text.

9.4.2 Replace (Ctrl-H)

Open the findreplace dialog.
Find and replace a word in the entire text.

9.4.3 Find in Selection

Open the find dialog.
Find a word in the selected text only.

9.4.4 Replace in Selection

Open the findreplace dialog.
Find and replace a word in the selected text only.

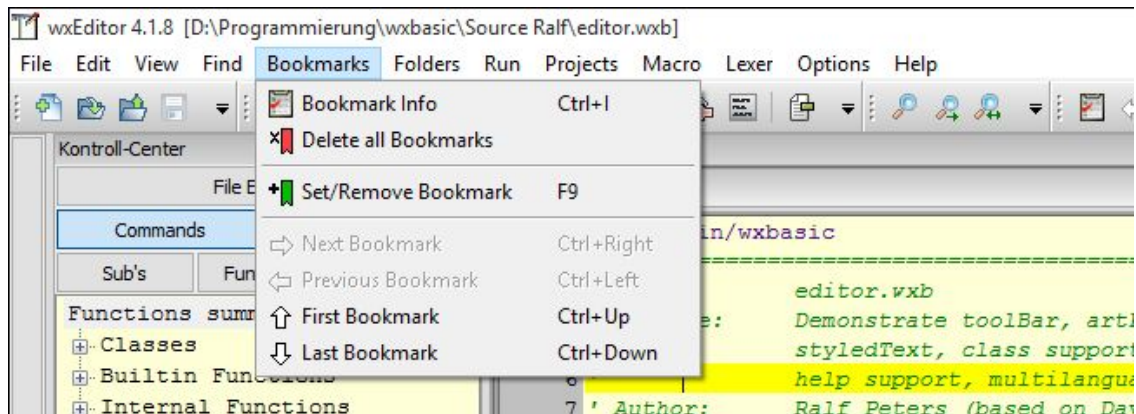
9.4.5 Repeat last Find (F3)

Repeat the last search.

9.4.6 File Search

Open a dialog to search for files in the system.
Simply search for files by file extension or by included text. In the result list it is possible to open a founded file.

9.5 Bookmarks Menu



You can set bookmarks for each file as far as you want. Bookmarks are set and delete with the F9 key. All bookmarks are shown in the bookmarks Info. The bookmarks are saved, if you select 'save bookmarks' in the options menu.

9.5.1 Bookmarks Info (Ctrl-I)

Display all bookmarks in a new window.
Jump to a bookmark by selecting or delete it by pressing the delete button.

9.5.2 Delete all Bookmarks

Delete all bookmarks in the current selected file.

9.5.3 Set/Remove Bookmark (F9)

Create a new bookmark or delete an existing bookmark on the current line.

9.5.4 Next Bookmark (Ctrl-Right)

Jump to the next bookmark in the current selected file.

9.5.5 Previous Bookmark (Ctrl-Left)

Jump to the previous bookmark in the current selected file.

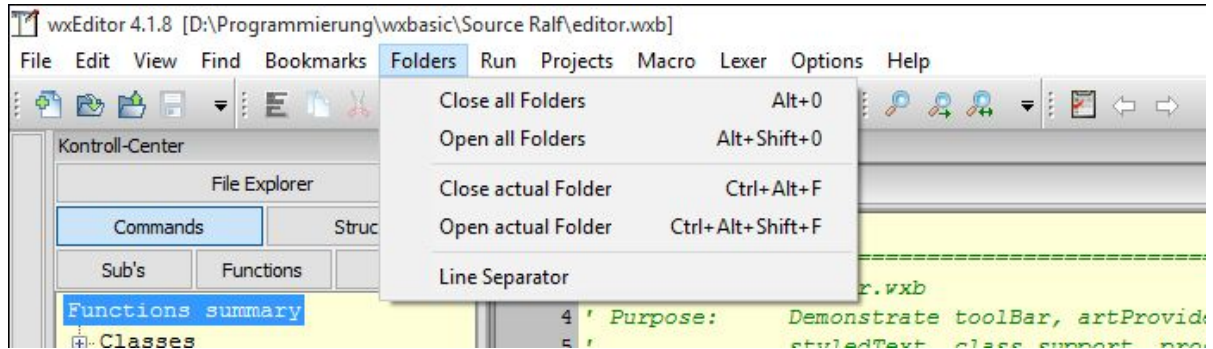
9.5.6 First Bookmark (Ctrl-Up)

Jump to the first bookmark in the current selected file.

9.5.7 Last Bookmark (Ctrl-Down)

Jump to the last bookmark in the current selected file.

9.6 Folders Menu



Folders are visible, if the 'View Folders' menuitem is checked in the 'View' menu. They are marked by line indentation.

9.6.1 Close all Folders (Alt-0)

Close all folders.

You can see closed folders as a '+' char of the left side of the text (folder margin).

9.6.2 Open all Folders (Alt-Shift-0)

Open all folders.

You can see opened folders as a '-' box of the left side of the text (folder margin).

9.6.3 Close current Folder (Ctrl-Alt-F)

Close the folder on the mouse position. This is the same as clicking on the “-” box in the folder margin.

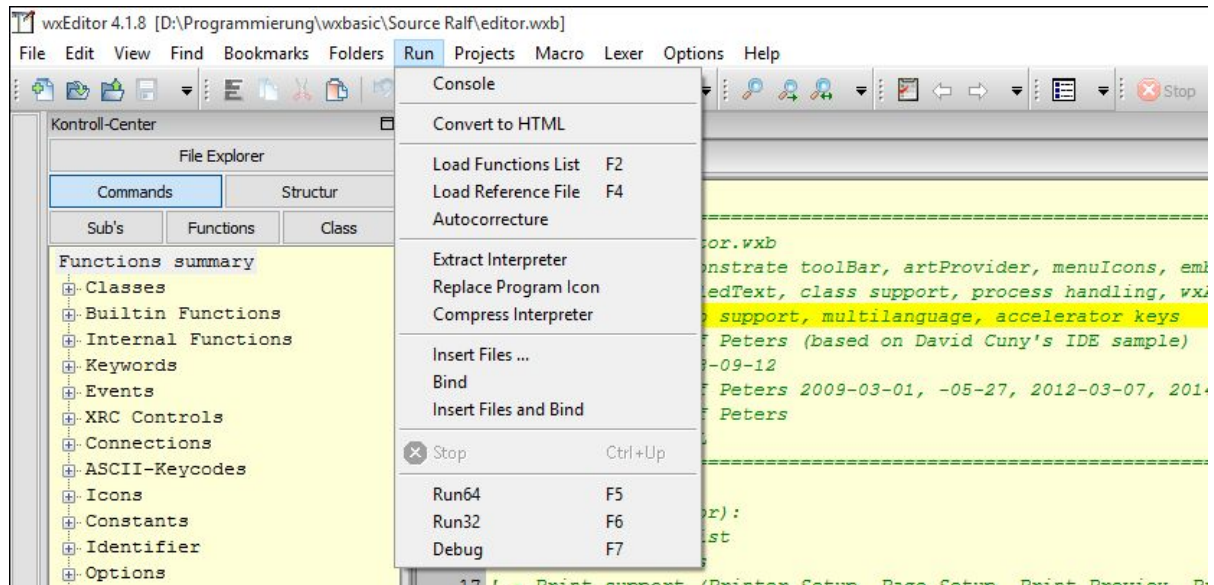
9.6.4 Open current Folder (Ctrl-Alt-Shift-F)

Open the folder on the mouse position. This is the same as clicking on the “+” box in the folder margin.

9.6.5 Line Separator

If checked, a line will be displayed between the first and the last line of a closed folder.

9.7 Run Menu



9.7.1 Console

Open a console window.

9.7.2 Convert to HTML

This is a very simple text to HTML converter and an experimental function. This routine is very old and must be rewritten...

Description:

- If the program found a selection at the beginning of the file, this selection is set to bold (for example, as a caption).
- You can create a table of contents, if the headline is underlined twice ('=' Char).
- All headlines are set to italic and underline.
- If the line beginning with:
 - "-" an unordered list or
 - "1." an ordered list will be created
- One empty line ends a paragraph.
- Http or E-Mail adress will set as a connection.

Currently no other functions are available.

9.7.3 Load Functions List (F2)

Search in the text for declared searchwords and display these in the control center. Searchwords are declared in the 'Lexer Options...' dialog for each lexer.

9.7.4 Load Reference File (F4)

If the program found a reference file for the current selected lexer in the “/Resource/Lexer” directory, this file would be loaded into the control center.

9.7.5 Autocorrecture

Scan the text, insert spaces and set commands to the correct case. It is the same as you check 'Insert Spaces' and 'Autocorrecture' in the options dialog and scroll down. This is useful, if you load a new file and you will correct it. The function is only available, if a reference file is loaded.

9.7.6 Extract Interpreter

Extract the wxBasic interpreter (wxbasic or wxbasic.exe) from the wxEditor executable and save it in the wxEditor working directory. But it's also possible to automatically copy the interpreter to the current file directory. So you can test wxBasic without having the wxBasic source.

9.7.7 Replace Program Icon (Windows only)

wxBasic can't compile the code into an executable. It binds the code with the interpreter. So you can view the wxBasic icon from the interpreter only. To replace the icon in the interpreter you can use this function. Place a copy of the interpreter to your project directory and run this menu item. It unpacks the packed Interpreter by using the executable packing program “upx.exe” and replaces the interpreter icon with a new one by using “Resource Hacker”.

9.7.8 Compress Interpreter (Windows only)

Compress the wxBasic interpreter (wxbasic or wxbasic.exe) with “upx.exe” on windows.

9.7.9 Insert Files

Scan the code for include files and insert these files into the text. Furthermore the text is cleaned up (remove unneeded text in executables).

Save the new file with another filename when the original filename !

This function is used to create a new or to update a language file for example in “Poedit”.

9.7.10 Bind

Bind the current selected file with the wxBasic interpreter to an executable. If no interpreter exists, the program will extract it from the wxEditor. If you have included files with the menu item “Insert Files” you can now bind the new created File.

9.7.11 Insert Files and Bind

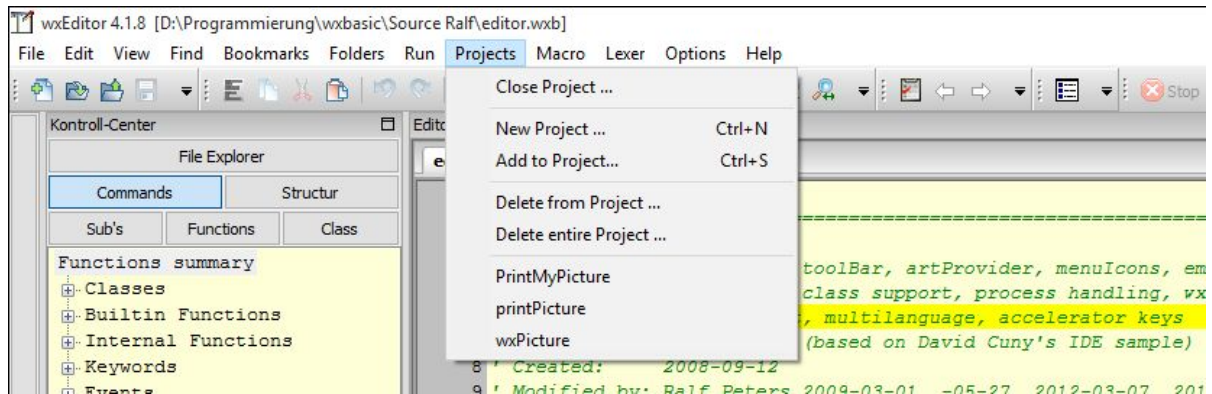
Scan the code for include files and insert these files into the text. Furthermore the text is cleaning up (remove unneeded Text in executables). Afterwards the code is bind to the wxBasic interpreter to an executable.

9.7.12 Stop Program

Stop the executed code.

After the normal menu items all commands, set in the “Lexer Options...” dialog, are shown.

9.8 Projects Menu



A project is a file with the extension "prj". In this file are saved all filenames of your project.

You can create a subfolder in the project folder for storing all project files. Also you can see and open all your projects in this menu item. It's faster and easier to open your files than the file open dialog.

9.8.1 Close Project

Close all files stored in your project file.

9.8.2 New Project (Ctrl-N)

Create a new project. It create a new directory in the projects directory with the given name.

9.8.3 Add to Project (Ctrl-S)

Add the current activated file to a project. Select a project from the list.

9.8.4 Delete from Project

Remove a file from a project.

Select a project from the list. From the following list you can select the file to be removed.

The file will not be deleted.

9.8.5 Delete entire Project

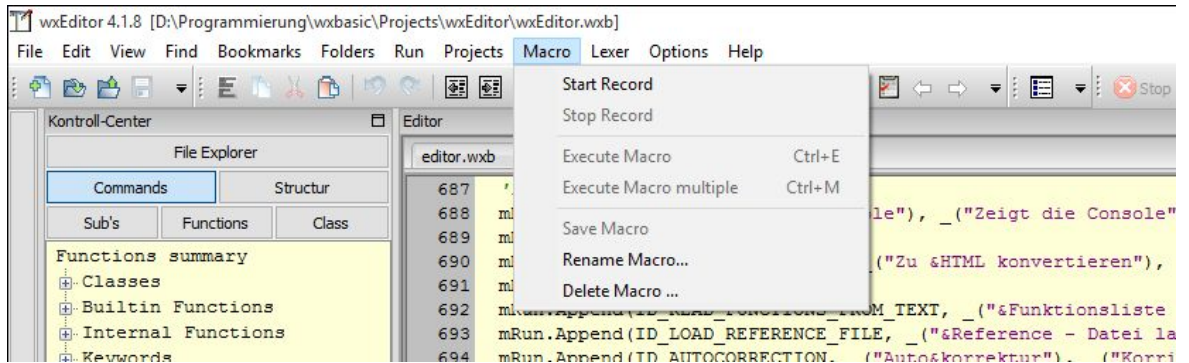
Select a project from the following list.

Warning!

All files in the project directory will be deleted and the directory will be removed, is it possible!

After the normal menu items all your projects are added to the menu.

9.9 Macros Menu



9.9.1 Start Record

Start the macro record.

9.9.2 Stop Record

Stop the macro record.

9.9.3 Execute Macro (Ctrl-E)

Execute a new recorded macro.

9.9.4 Execute Macro multiple... (Ctrl-M)

Execute a recorded macro multiple times. Select a Macro from the following dialog.

9.9.5 Save Macro

Save a recorded macro. Saved macros are shown on the bottom of the menus.
Click on a macro to execute it.

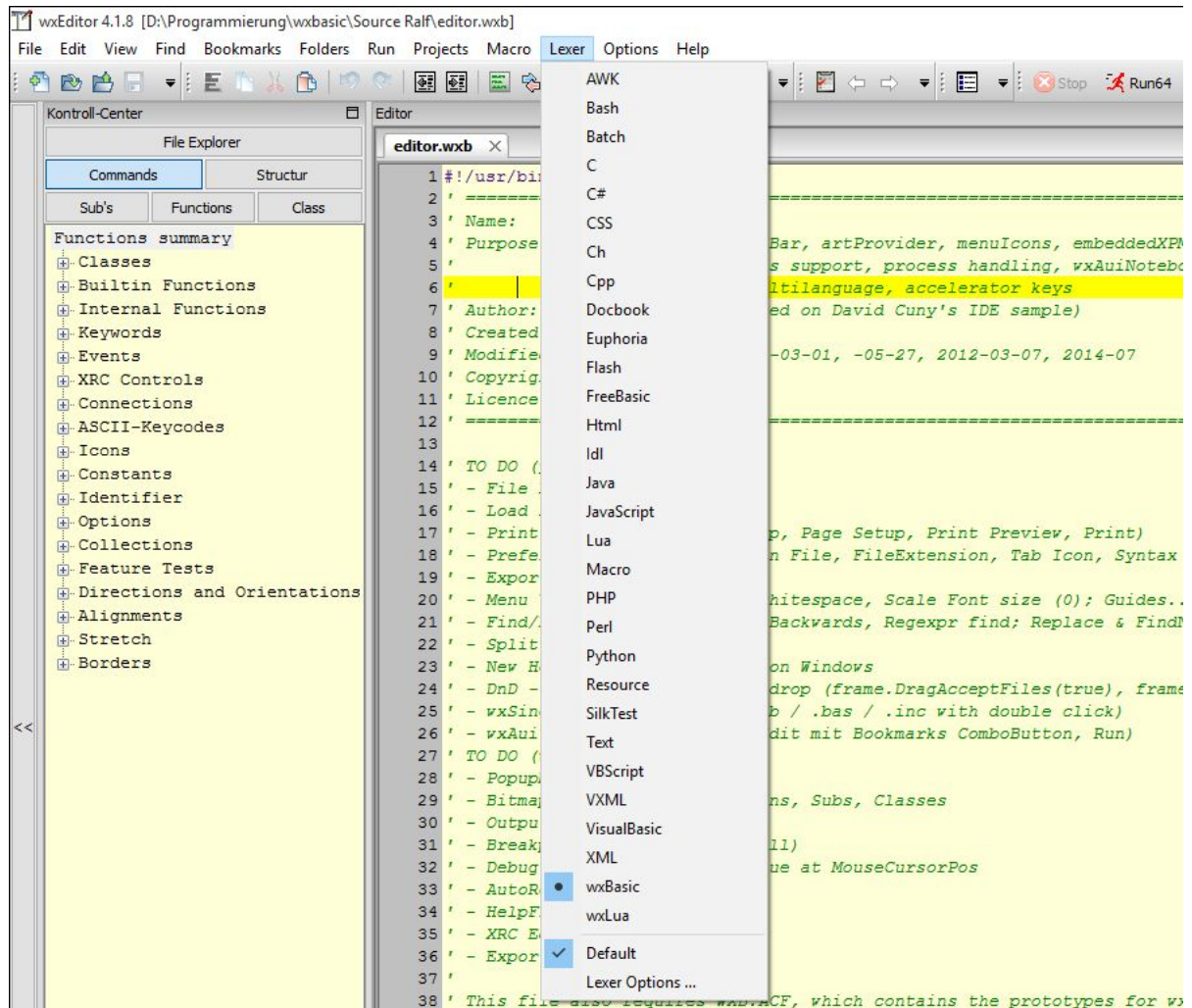
9.9.6 Rename Macro...

Rename a recorded macro. Select a Macro from the following dialog.

9.9.7 Delete Macro...

Delete a recorded macro. Select a Macro from the following dialog.

9.10 Lexer Menu



Lexers are saved in “/Resource/Lexer” directory. A lexer has the extension '.lex'. The name of the lexer file is imported to the wxEditor lexer menu. By clicking on a lexer menu item the program will load all keywords, commands, colors, styles and searchwords into the editor.

Take a look into the wxBasic lexer file, if you would create a new one.

9.10.1 Default

Set the selected lexer as the default lexer. So you can create a new file and this lexer is already loaded.

9.10.2 Lexer Options...

9.10.2.1 Commands

Here you can setup the working directory, the comment char, three keywords and up to six commands for the selected lexer. More than one keyword in one line are possible, separated by semicolon. The name in the keywords you can view on the button in the control center.

Example for keywords:

```
Subs  declare Sub; public Sub; private Sub
```

This example will show all entries beginning with these words in the control center under the button "Subs".

For set commands also you can use placeholders.

For example, compile and run a freebasic file, setup the command:

```
freebasic_path\fb.exe %p;%n.exe
```

or

with a given working directory

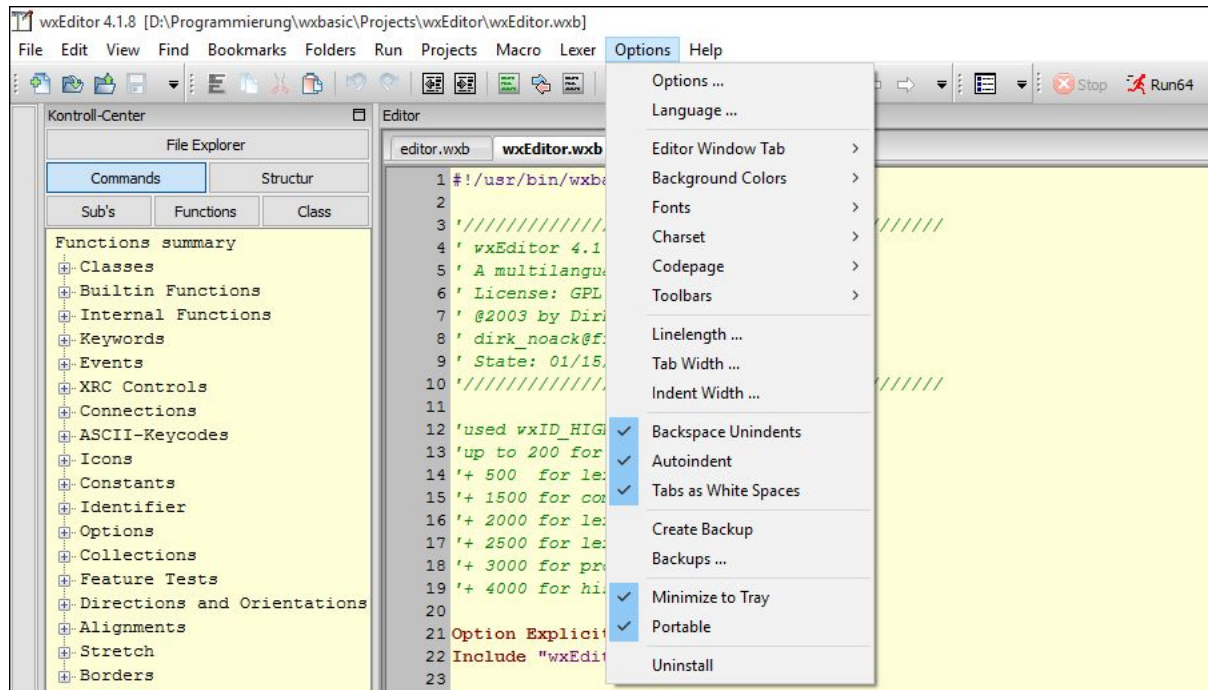
```
fb.exe %p;%n.exe
```

You can set a hotkey for each command. Be sure, that this key is not already used. The program does not check the keys.

9.10.2.2 Fonts and Colors

Set the font and background colors for each style of the lexer. The styles are reading from the lexer file and saved back to this.

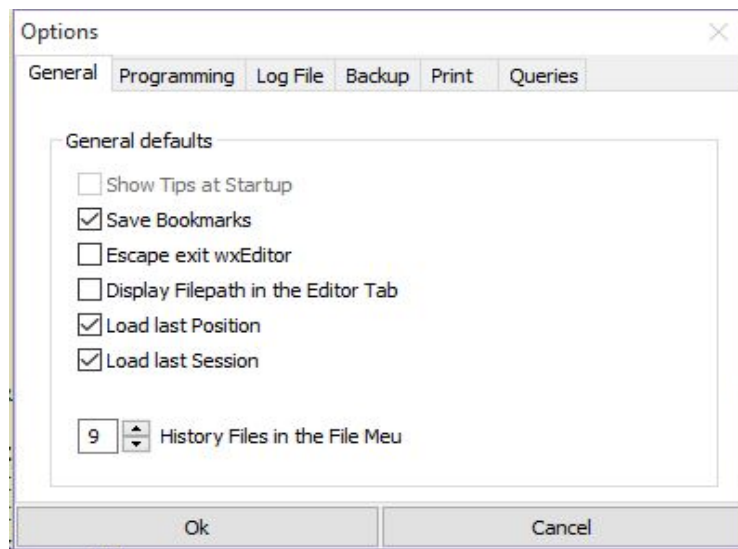
9.11 Options Menu



9.11.1 Options...

Open a menu for setting all options.

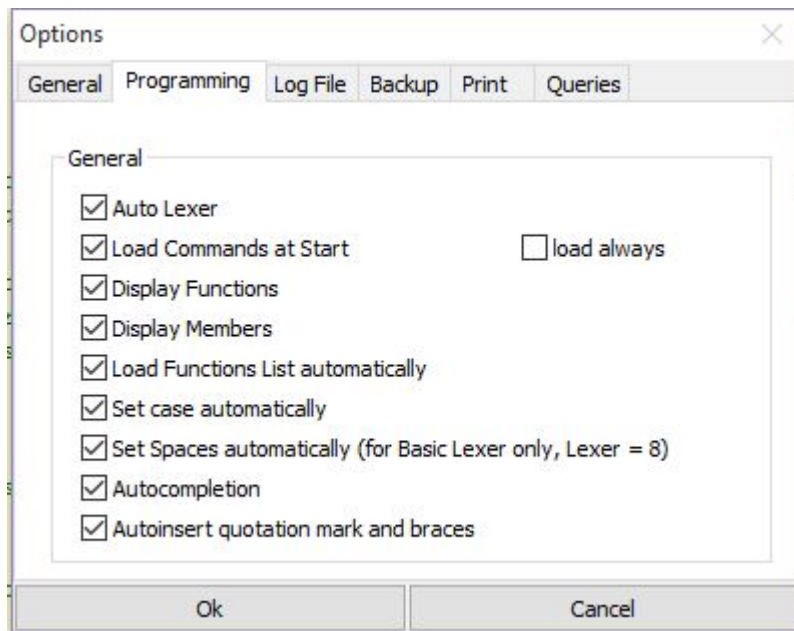
9.11.1.1 General



- Show Tips at Startup
Show a tips at startup
- Save Bookmarks
Save all bookmarks into the ini file for loading at next start
- Escape exit Editor
Exit the editor with the escape key

- Display file path in the Editor Tab
Display the path of the opened files in the tab
- Load last Session
Load all currently opened files at next Start
- Load last Position
Load the last Position of at next Start
- History Files
Set the Number of History Files in the File Menu

9.11.1.2 Programming



- Auto Lexer
Load the right lexer automatically by loading or changing a file. The editor read the extension of the file and change the lexer automatically. It can cause Problems, if more then one language have the same extension. Then you must select the lexer in the lexer menu manually.
- Load Commands at Start
Load the reference file automatically, if exist. The file is loaded once only.
- load always
The reference file is loaded, if you change to another file in the notebook
- Display Functions

Display the full function as a calltip in the editor window, if the cursor is on an opened brace of a function/class.

➤ Display Members

Display all members for the function in a user list, if the cursor is on a dot after a function/class. Scroll in the members list with the cursor keys and insert a member by pressing the tab key.

Note: If you store functions in an array/table with variables maybe this will not work correctly. The editor scan the code backwards and use the first founded declaration to display the members.

➤ Load Functions List automatically

The functions list in the control center will normally load at opening or at activating a file. Deactivating this function will prohibit this automatically loading. You can manually reload this list by pressing the 'F2' key. Activating this option to speeding up the file loading time.

➤ Set case automatically

Write all functions and members in lower case. The editor will correct the case automatically. This function works with commands rather then with all searchwords in the control center. A reference file must be loaded.

➤ Set Spaces automatically

Set spaces between operators and braces automatically. This option is optimized for the VB lexer! wxBasic also use this lexer. I have not tested it with other lexers.

➤ Autocompletion

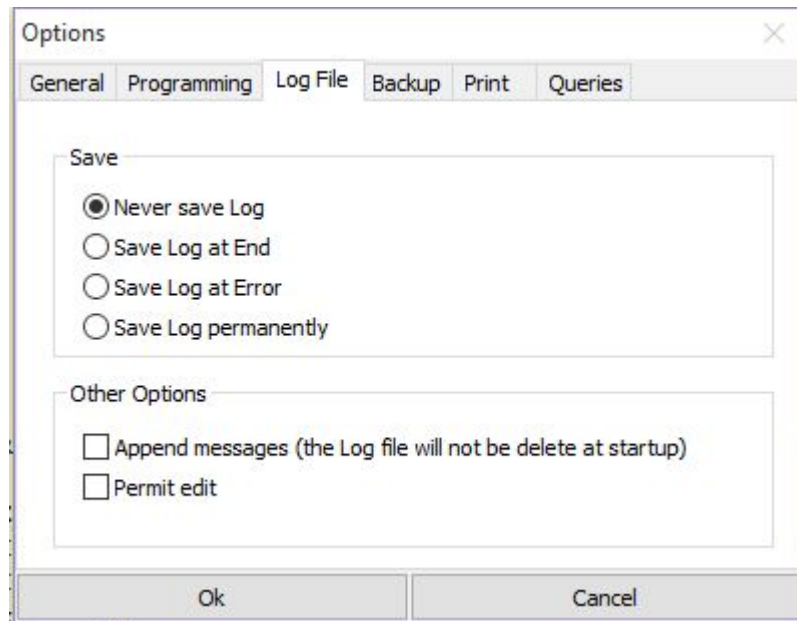
After the first four typed chars a list with all known words is shown. Select a word and insert it with the tab key.

Note: Some features decelerate the startup and the working with the editor (See 'System Requirements'). On modern computers this is#nt a problem.

➤ Autoinsert quotation mark and braces

Check this option to insert the double quotation mark and closes braces automatically.

9.11.1.3 Log File

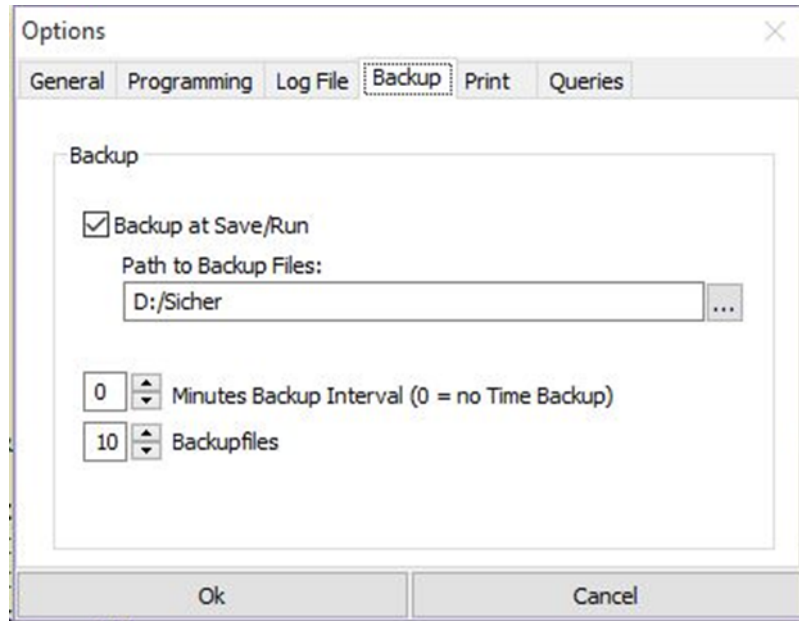


- Never Save Log
Don't save messages into the log file
- Save Log at End
Save a log file at the end of the session (all messages)
- Save Log at Error
Save an entry on each error to the log file
- Save Log permanently
Save an entry on each message to the log file (permanently saving)

Other Options:

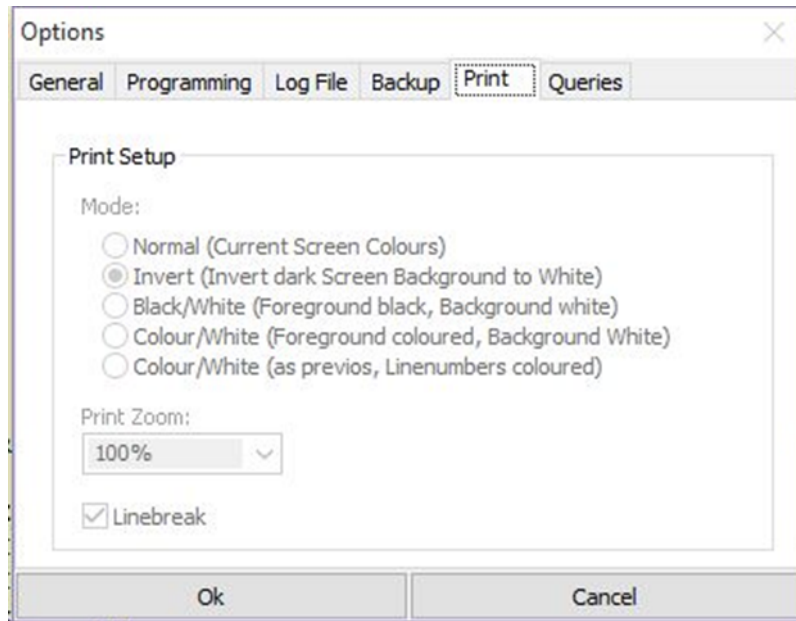
- Append Messages
Normally a new log file is created on each session and the log window is read only. With this option the file will not be deleted and messages are appended.
- Permit edit
With this option you can write your own messages into the log window. After confirming a line by pressing the enter key the line will be saved to the log file. Clear the log window by using the corresponding menu item in the view menu.

9.11.1.4 Backup



- Backup at Save/Run
Save a backup of the file then save or execute the file
Set an existing path for the backup files, otherwise you get an error message.
- Minutes Backup Interval
Set the timer for backups.
- Backupfiles
Set the counter for backup files from 1 to 100

9.11.1.5 Print

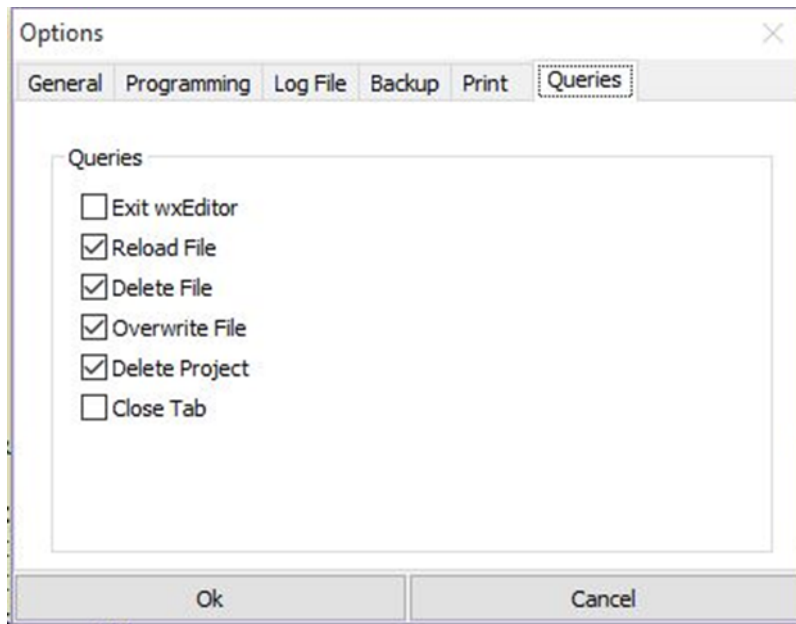


This item has no function yet.

You can read out the messages from the message window and save them in a log file. 4 methods are possible:

- Mode:
Set the print modes, differently by colors
- Print Zoom:
Set the printer zoom
- Linebreak
Break long lines during printing.

9.11.1.6 Queries



- Exit wxEditor
Ask before exiting wxEditor from the file menu
- Reload File
Ask before reloading a file from the file menu
- Delete File
Ask before deleting a file from the file menu
- Overwrite File
Ask before overwriting a file
- Delete Project
Ask before deleting a project

9.11.2 Language

Select a new language for the program (need restart).

9.11.3 Editor Window Tab

Select the tabulator position top or bottom.

9.11.4 Background Colors

Select background colors for:

- editor window
- control center
- log window
- error marker
- actual line
- bookmarks
- selections
- dsmpayer

9.11.5 Fonts

Select fonts for:

- control center
- log window

9.11.6 Charset

Set the Charset for the wxEditor.

9.11.7 Codepage

Set the Codepage for the wxEditor.

9.11.8 Toolbars

Select toolbars to show:

- file
- find
- bookmarks
- edit
- folders
- commands
- dsmpayer

9.11.9 Line Length...

Set the line length of the editor.

9.11.10 Tab Width...

Set the tab width.

9.11.11 Indent Width...

Set the indentation width.

9.11.12 Backspace Unindents

If you press the backspace key, the number of chars of the indent width are removed.

9.11.13 Autoindent

Indent the indentation width of the last line, if you press the enter key.

9.11.14 Tabs as Spaces

By pressing the tab key the tab will be insert as the number of white spaces.

9.11.15 Create Backup

Create a Backup of the selected File.

9.11.16 Backups...

Search for backups in the backup directory you set in the options menu. Now you can see a list of all available backups. From here you can open or restore a backup file.

Warning:

By pressing the 'Restore' button the original file will be overwritten!

9.11.17 Minimize to Tray

Minimize the program to the system tray.

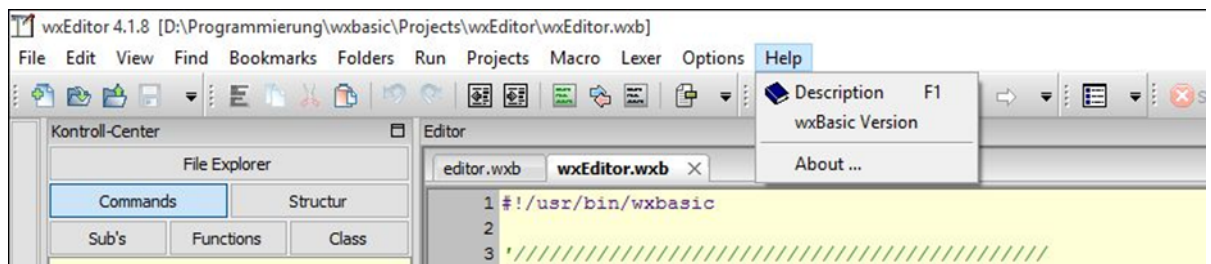
9.11.18 Portable

By default, wxEditor will save the ini file in your home directory. Check this option to save this file in the wxEditor program directory.

9.11.19 Uninstall

This option will delete an existing wxEditor folder in your home directory and ends the program. After this you can delete the wxEditor directory.

9.12 Help Menu



9.12.1 Description (F1)

Open this file, if a pdf reader is installed.

9.12.2 wxBasic Version

Display the wxBasic version, with which the wxEditor is binded.

9.12.3 About...

Show the "About" dialog.

10 Disclaimer

I have successful tested the program on WinXP up to Win10 system but I can't excluding, that there are still any errors. Therefore please make a backup of your datas always.

This software is provided "as is". You can use that at your own risk.

For suggestions for improvements or if you find a bug, please send me an email or post in the wxBasic Forum.