

## MyHiddenMenu Quick start guide

MyHiddenMenu (mhm) is primarily a simple menu program to execute programs. You can create menus, which are hidden on the desktop. Alternatively the menus can be shown in the taskbar.

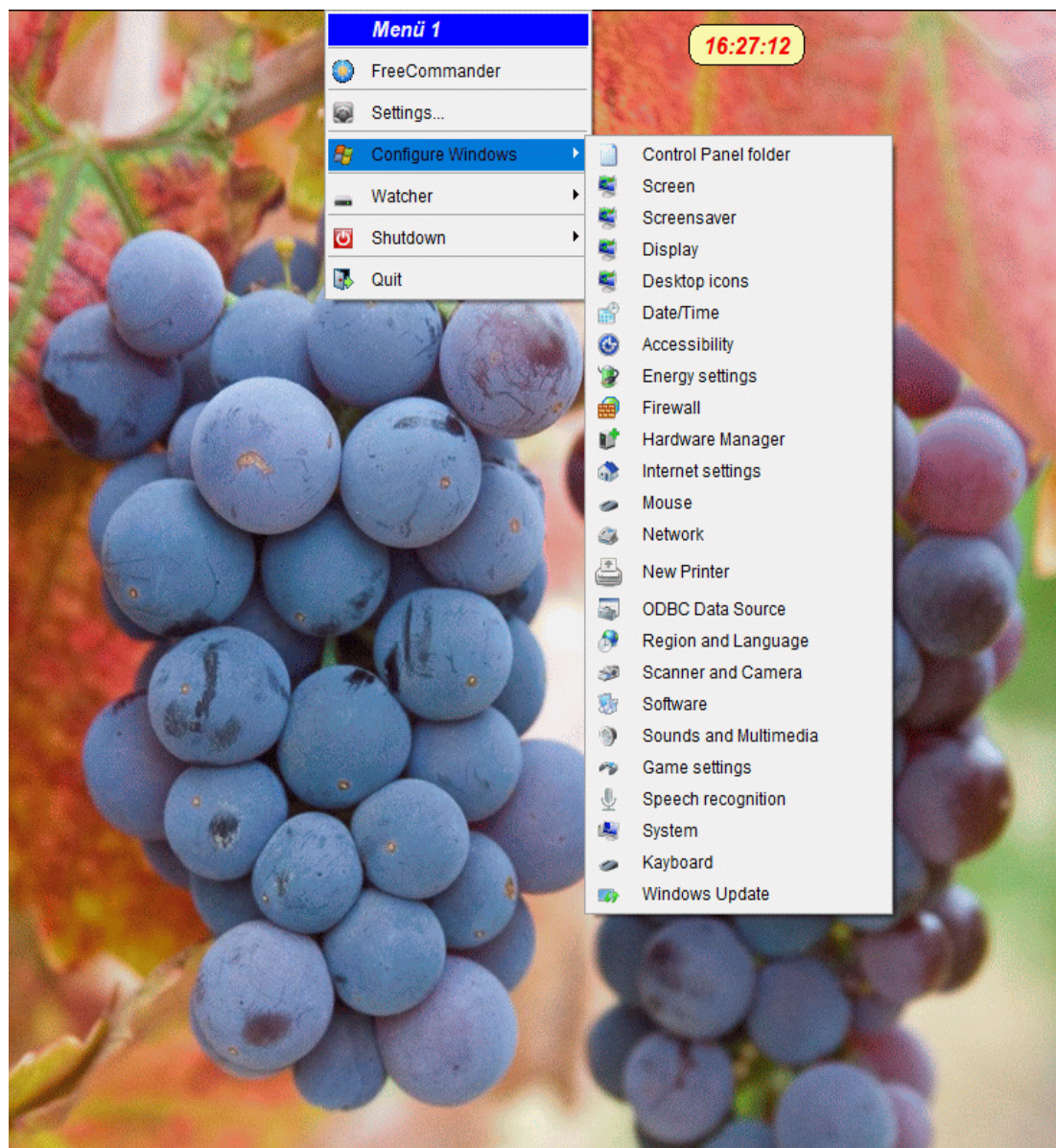
License: GPL

Dirk Noack

dirk.noack@wxbasic.de

<http://www.wxbasic.net>

<http://www.forum.wxbasic.de>



### Features:

- create up to 8 menus
- create menu structure with submenus
- drag'n drop files to the menu structure
- Simply sort the menu items
- add windows system control programs to a menu
- add shutdown menu to a menu
- menus can be placed on top, left right or bottom of the screen or in the taskbar
- show a menu with a right mouseclick
- set fonts and colours for each menu
- add mhm to the windows startup
- multilanguage support
- save ini file in user or in program directory (portable mode)
- show a digital clock on the desktop

### Additional Features:

- Autostart programs with mhm
- Alarm clock
- File System Watcher
- Show a Slideshow by dragging a picture file to a menu position

### To do:

- Menu as toolbar
- Add Scheduler independent of the alarm clock
- Notepad
- RSS

### Known problems:

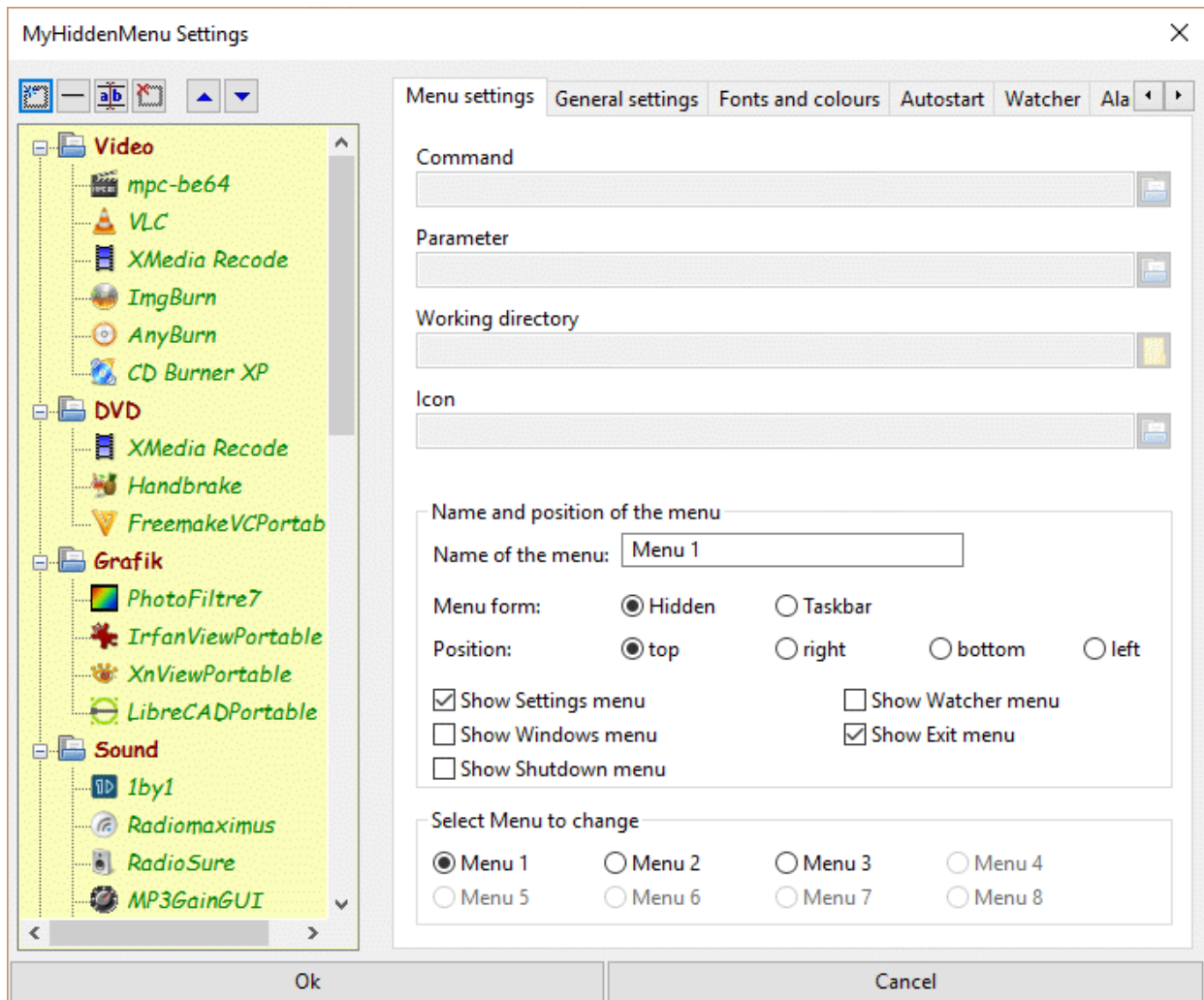
- When changing the language the repeat combobox of the alarm clock has to be reset
- Hidden menus at the bottom of the screen may conflict with the taskbar
- The icon quality could be better

### First start

At the first start, a message window appears, from which the settings window can be called directly. Or create your menu by placing the mouse at the top of the screen and pressing the right mouse button. Now select „Settings...” to configure your menu.

The settings are usually self-explanatory.

## 1. Menu settings



The menu structure of the respective activated menu is shown on the left. Add menu items by Drag'n Drop or by the upper left button. Then you can change the name, delete menu items or change their order. The parameters of the activated entry are displayed on the right side.

The display of the menu can be set to the right in the middle. Here you can select the display as a hidden menu or as a menu in the taskbar.

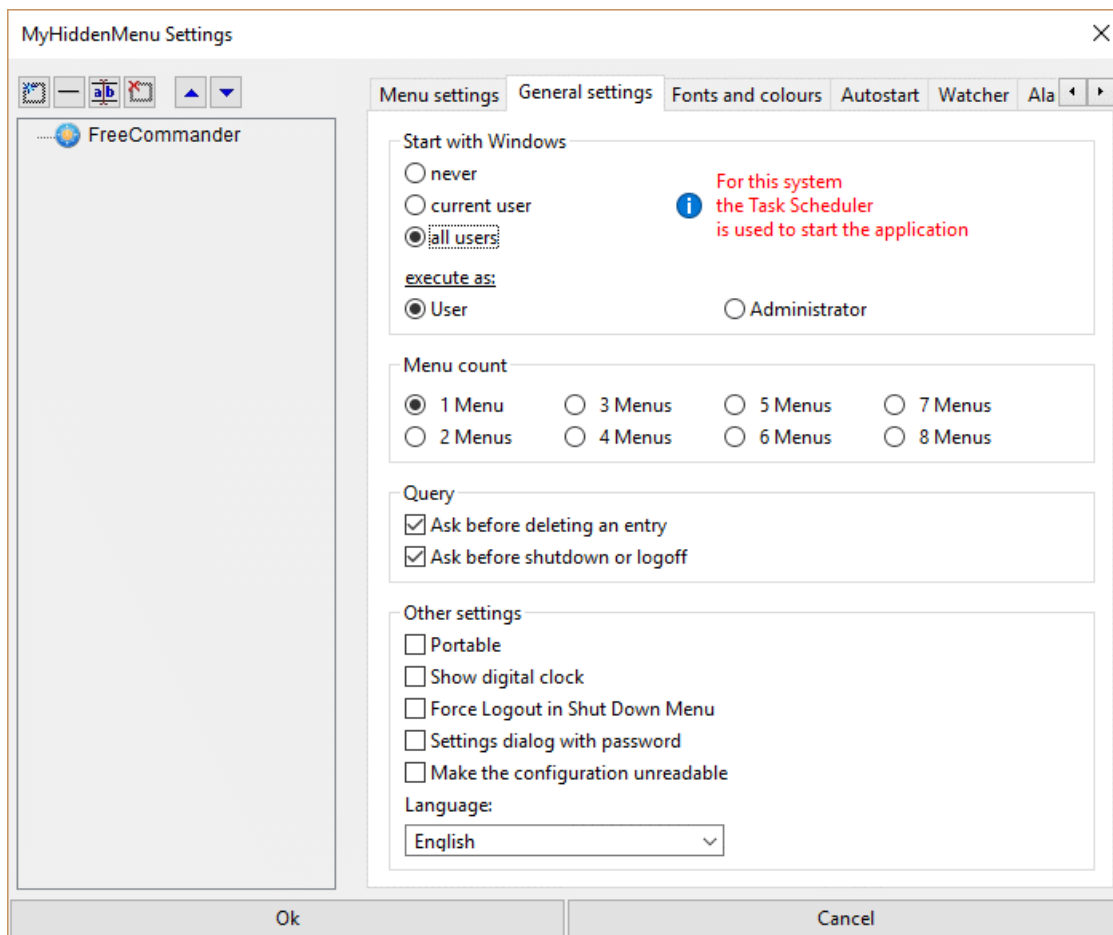
In a hidden menu the position of the menu can be defined. Here you can choose between the top, bottom, left and right. This means that the respective menu is activated with a right-click on the respective screen border. You can also place several menus in one position. The place is then divided accordingly.

The name of the menu can also be set here.

Activate Comboboxes to add the settings menu, Windows system menu, shutdown menu, watcher menu or exit menu.

Select a menu to change in the lower right corner.

## 2. General settings



On this page you can define the number of menus as well as the type of Autostart of MyHiddenMenu. If present in the system, the task scheduler is used to start the program. Otherwise the registry will be used.

You can start the program as a user or as an administrator.

**Note:** If you start mhm as a user and run a program with administrator privileges from your menu, the program will not start because of missing permissions.

Set the queries that should be done for a given action.

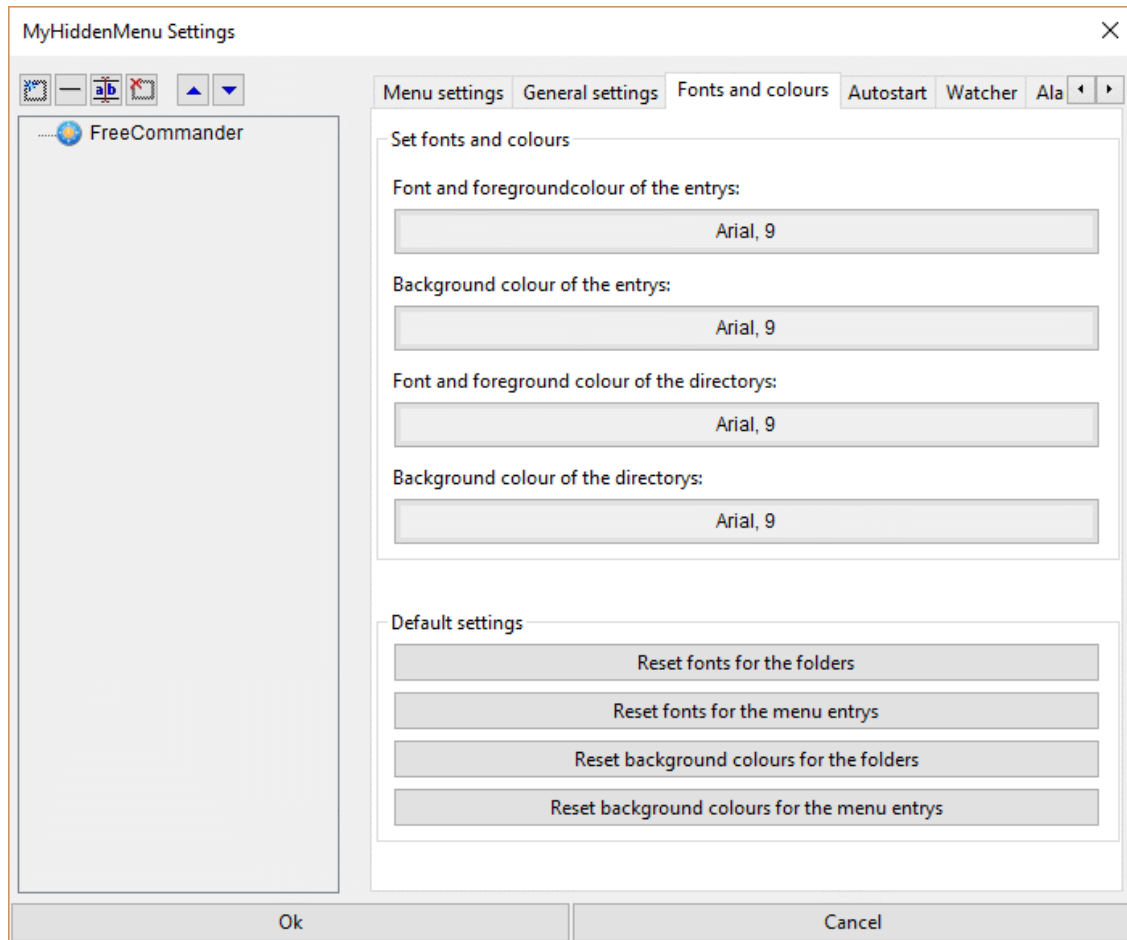
Activate Portable mode to save the ini file in the program directory. In addition, a digital clock can be displayed on the desktop.

Select „Force Logout“ to close all programs at logoff without waiting for completion. This can be helpful for hanging programs.

You can provide the settings dialog with a password. The password is stored encrypted in the configuration file. The encryption is not very secure, but at least you can not read it at first glance. Alternatively, you can also encrypt the entire configuration file. Then it gets harder to get to the data.

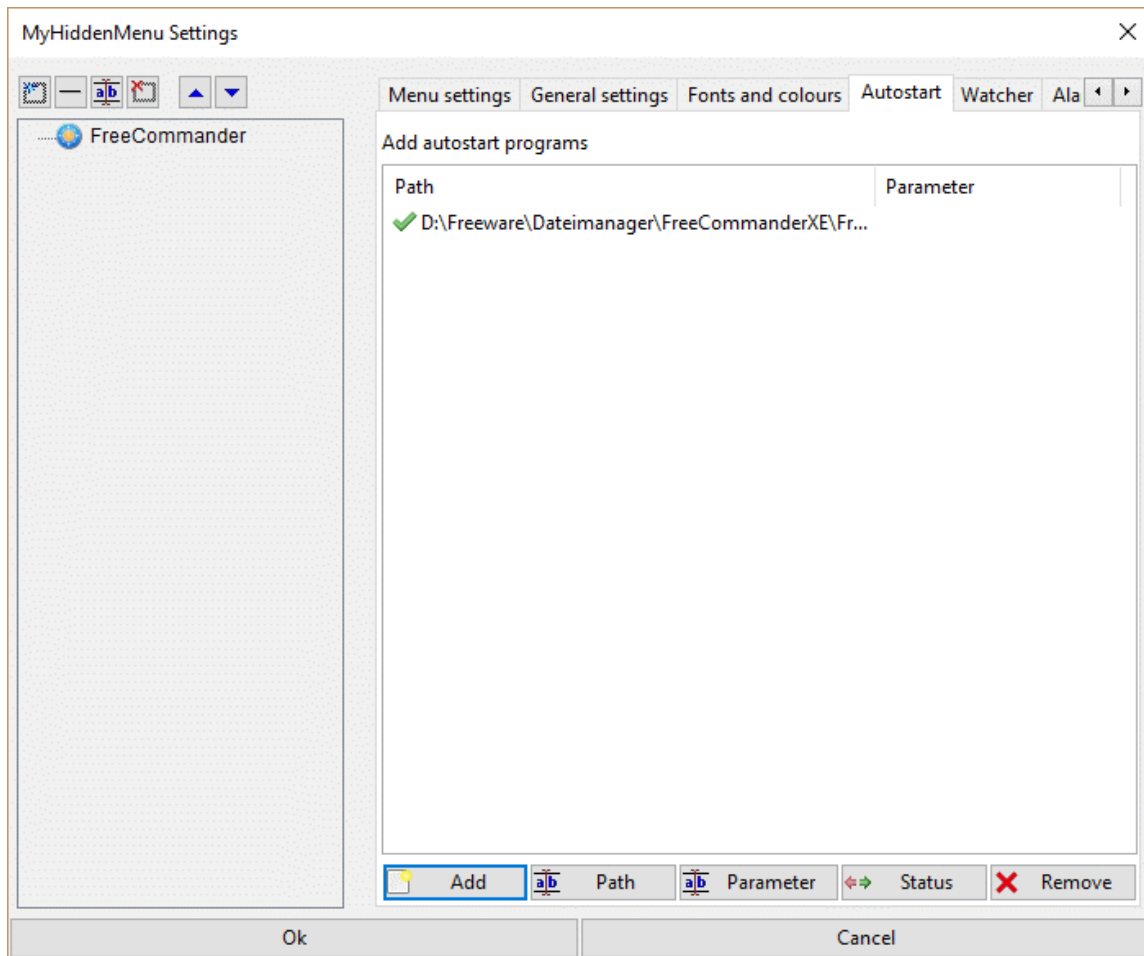
Finally, you can set the supported languages. At the moment, only English and German are available.

### 3. **Fonts and Colours**



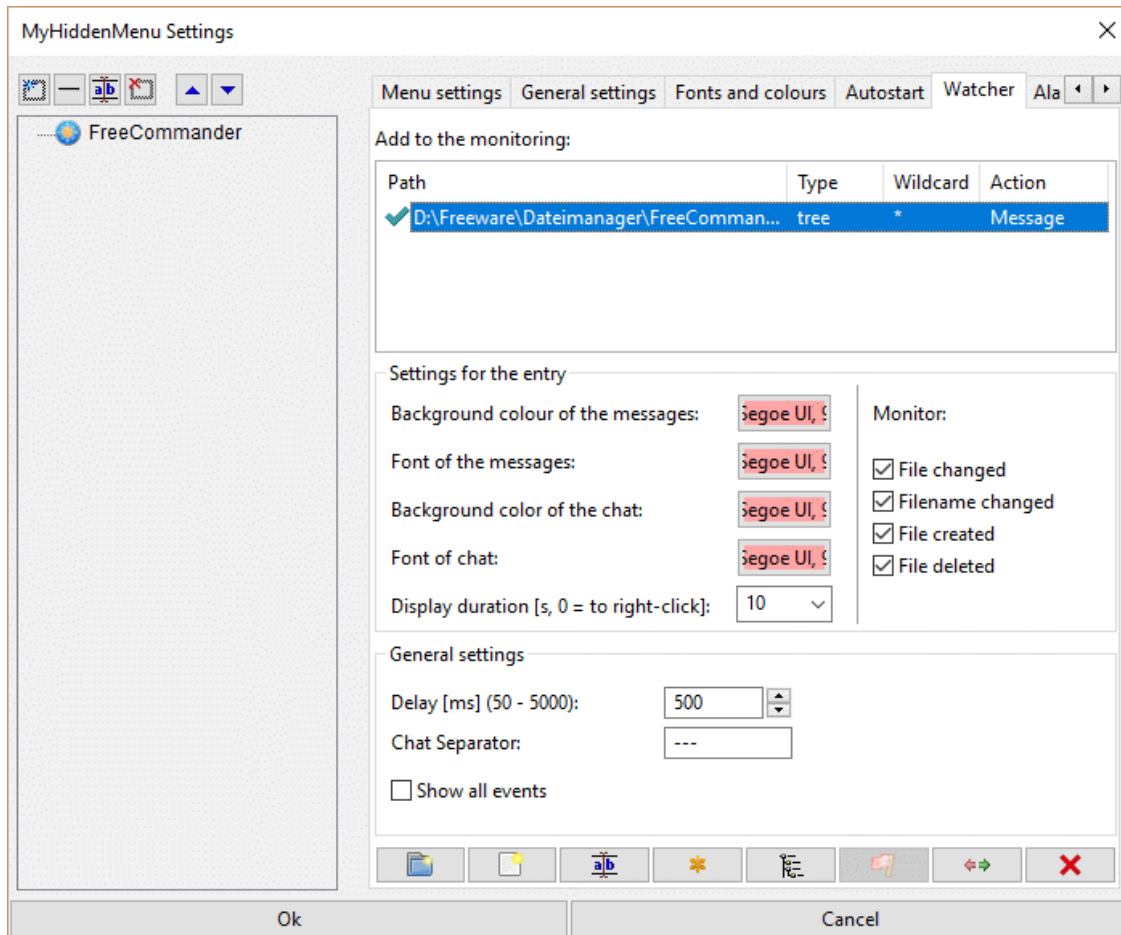
Select fonts and colours or reset it for the selected menu here. Menu entries and directories are distinguished.

#### 4. Autostart



Add or remove programs, which are started with mhm.  
Change the path of an already added program. Add parameters to a program or change the status of the program to inactive. Then it will not start automatically.

## 5. Watcher



The FileSystemWatcher is a powerful tool that allows monitoring of folders and files.

When monitoring individual files, it can:

- automatically delete the file
- automatically open the file
- use the file as a chat file with automatic notification of a new message
- a message of the file change take place
- disable the network adapter

When monitoring directories, a wildcard can be defined. Also, you can set whether only the directory or all subdirectories should be monitored.

Please make sure that no double monitoring takes place. This means that you not monitor a single file and then a parent directory that contains this file.

Change the status of an entry to active or inactive.

Choose the color and font for the notifications.

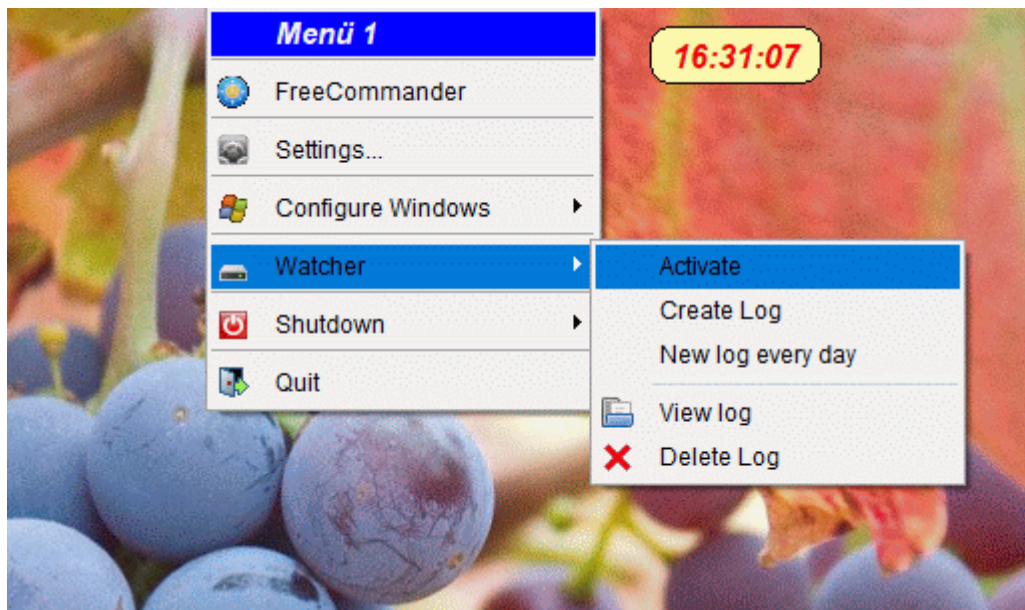
Choose which events should be intercepted.

Set the delay when intercepting the events. 500 ms is a good time.

Set the separator for the different messages in a file, which is used for a chat.

If you want to see all events then you can do this by selecting the checkbox.

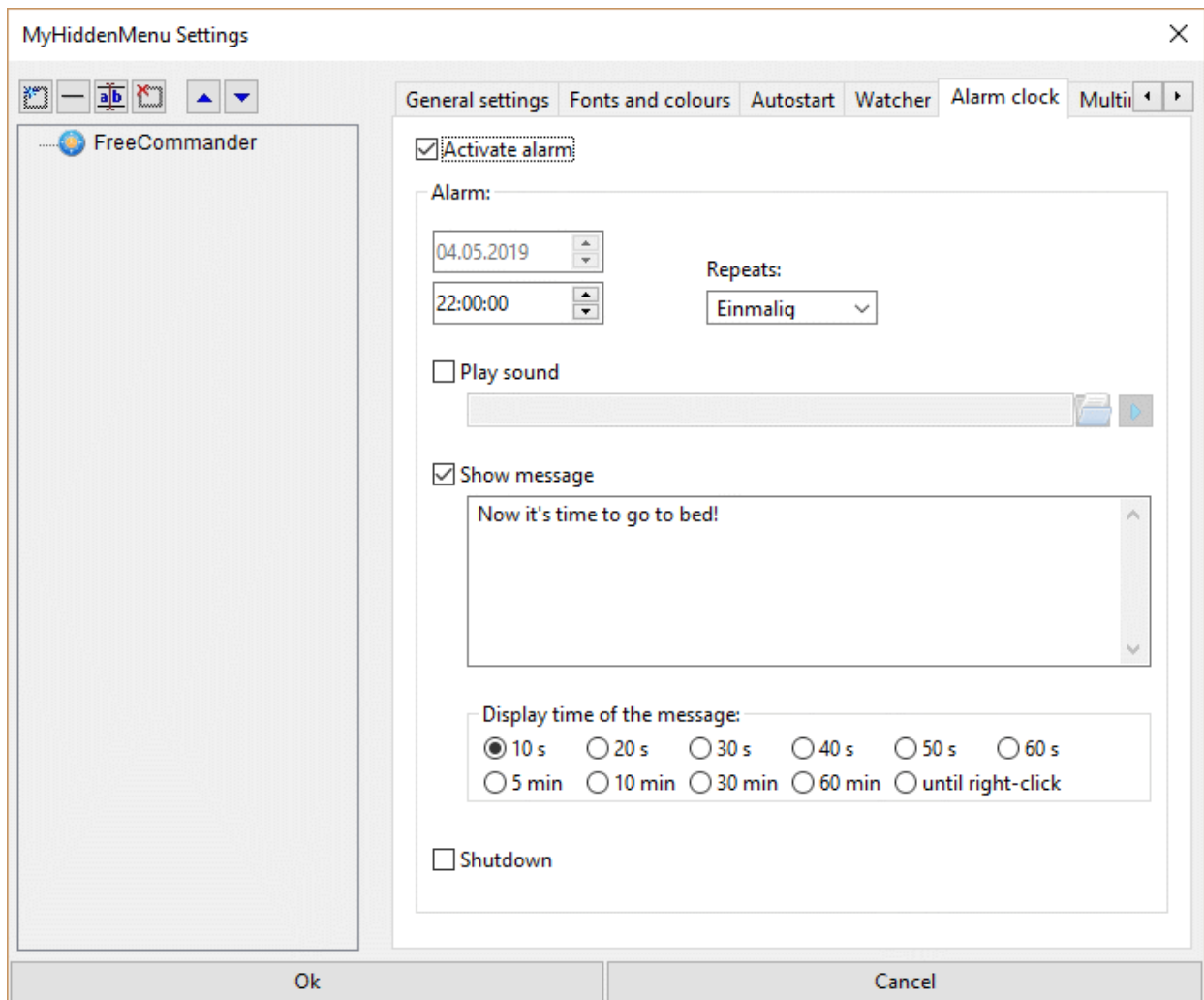
The Watcher has its own main menu:



Here you can activate or deactivate the watcher and specify whether a log file should be created. Specify whether the log should be updated or a new one created each day.

Show or delete the Log file here.

## 6. Alarm Clock



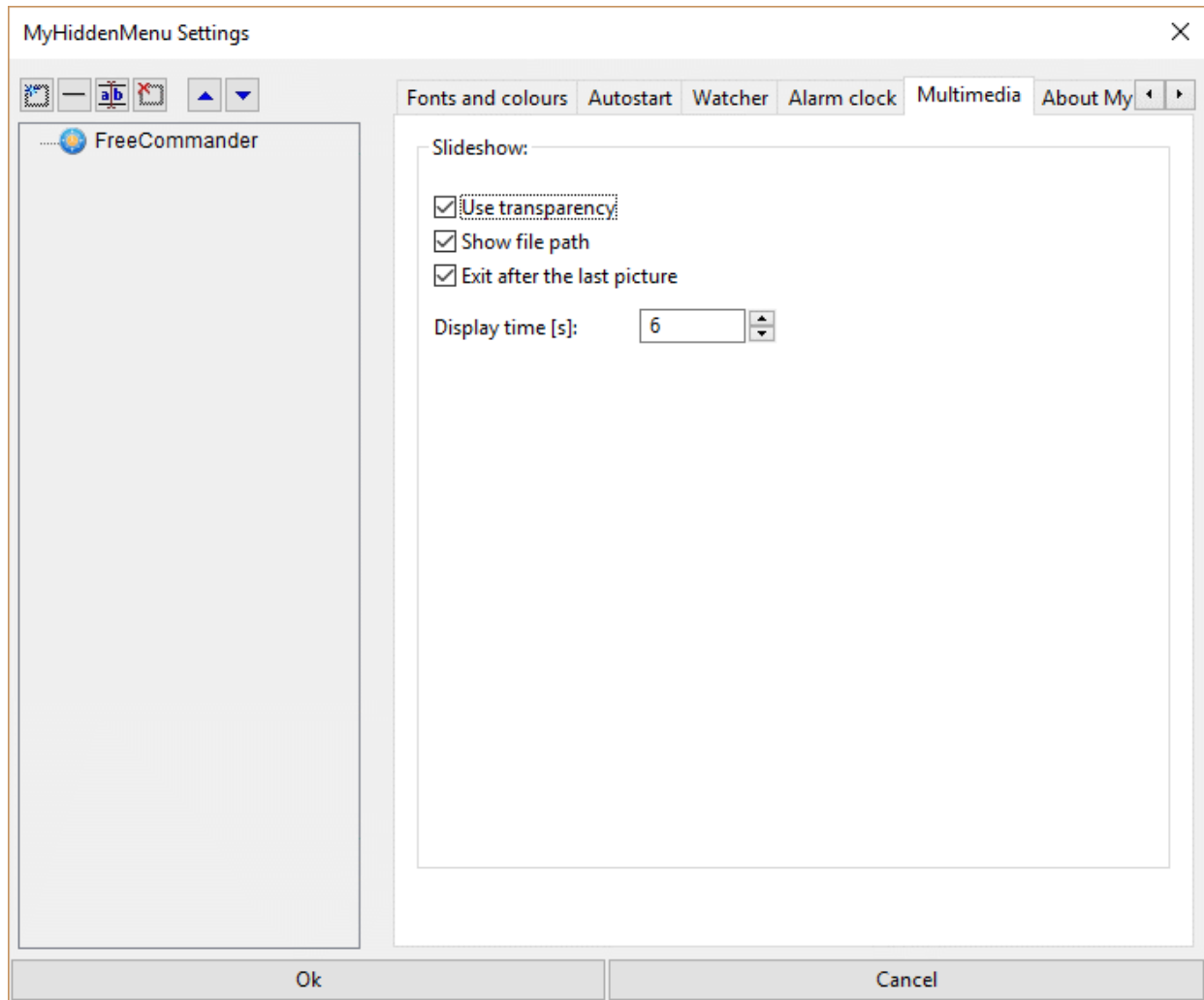
In this menu you can set an alarm. This allows a wav file to be played at a certain time, a note can be displayed on the desktop, or the PC can be shut down.

The repetitions can be defined.

If a message is displayed, the position can be changed with the left mouse button. This position is used for the next message.

Close a displayed message with the right mouse button or the message will be closed automatically after the set time.

## 7. Multimedia



Here you can set the parameters for a slideshow.

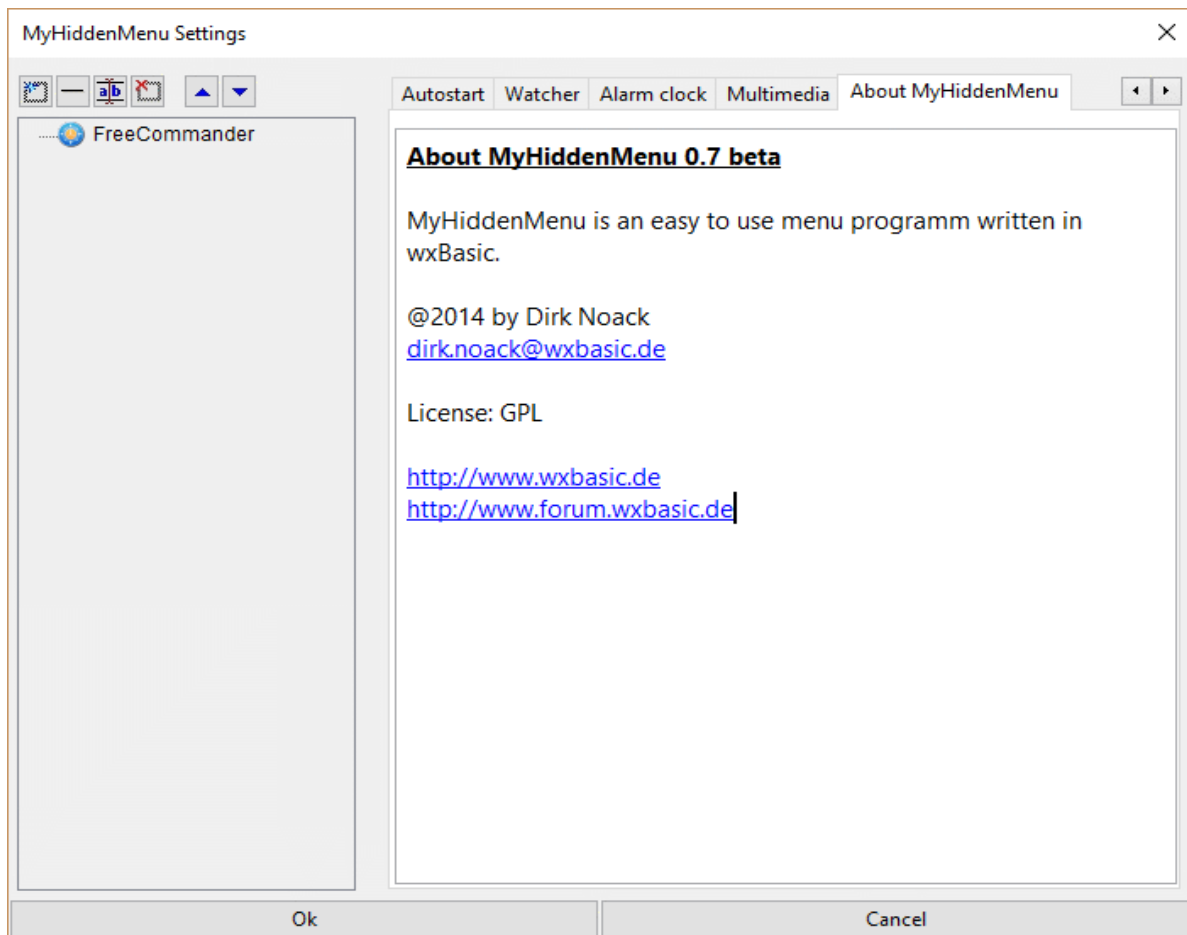
Use transparency shows a transparent background when an image has this setting.

Show file path shows the path of the file on the screen.

Exit after the last picture ends the slideshow. Otherwise, a query comes if the slideshow should be restarted.

Display time sets the time the image is displayed.

## 8. About



Show the About dialog.

## 9. Notes:

It can happen that a virus scanner delays the start and also the call of the settings as well as the change of the menus. After deactivation of the virus scanner this phenomenon was gone. So if you see this behavior, it is not the program itself.

At the moment the program is available in 32 bit. If required, a 64 bit version can also be provided.

## 10. Disclaimer

I have tested the program on Windows 7, Windows 8 and Windows 10. Nevertheless, errors may occur. If errors are found, please let me know.

This software is offered as it is. Use it at your own risk.